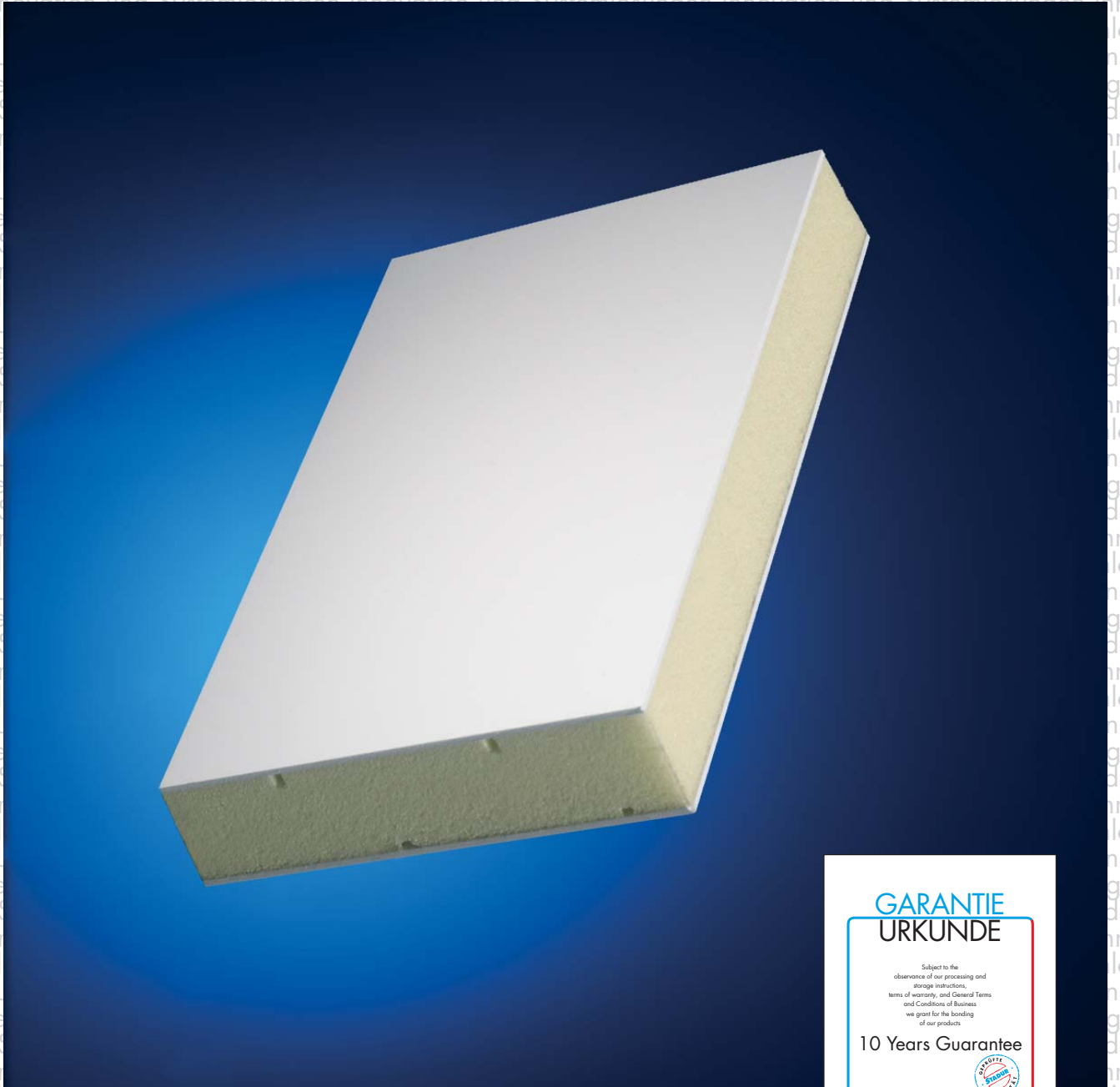




STADUR

Innovation und Systemlösungen

Made in Germany



**GARANTIE
URKUNDE**

Subject to the
observance of our processing and
storage instructions,
terms of warranty, and General Terms
and Conditions of Business,
we grant for the bonding
of our products

10 Years Guarantee



STADUR
Innovation und Systemlösungen

Stadur Produktion GmbH & Co. KG
Ottensheim 21-24 D-22714 Niendorf
Telefon +49 (0) 4144 254 0 · Fax +49 (0) 4144 254 100
E-Mail: stadur@stadur.com · www.stadur.com

Stadur Verbundelement FB-1

The PVC Composite Board

Product Information

Stadur Composite Element FB-1



Description:

FB-1 composite elements consist of an extruded polystyrene core, with hard-PVC facings on both sides, 1.0 mm, 1.3 mm, 1.5 mm or 2.0 mm thick. The composite element is covered with a protective foil on both sides. 10 years Stadur Guarantee



Properties:

- very good thermal insulation
- UV-Endurance (5 years manufacturer's guarantee for the PVC facings)
- good sound insulation values
- high impact resistance
- easy to process with the usual wood and metal working tools



Facings:

Hard PVC compact panels on both sides, 1.0 mm, 1.3 mm, 1.5 mm or 2.0 mm. Standard colours: similar to RAL 9016 brilliant or silk-matt, similar to RAL 1013, similar to RAL 1015, similar to RAL 9001 and Salamander white. Please refer to the current price list for valid formats and thicknesses of each colour.



Foam core:

Extruded polystyrene foam, CFC-free or CO₂ foamed, low vapour permeability, lowest water absorbance B 1 in accordance with DIN 4102. The foam core is corrugated for optimum adhesion. No dust release during processing.



Overall thickness:

20 mm and 24 mm
Further thicknesses (thicker/thinner) of the facing layers or the foam core available on request.



Formats:

2000 x 1000 mm 3000 x 2000 mm
3000 x 1500 mm 4000 x 2000 mm
Other formats and standard dimensions are available on request.



U-value:

The U-value depends on the used material thicknesses.

Thickness	Facings	U-value	dB-value	kg/m ²	Facings	U-value	dB-value	kg/m ²
20 mm	1.5 mm	1.21	–	4.88	2.0 mm	1.25	30	6.24
24 mm	1.5 mm	1.03	27	5.04	2.0 mm	1.06	32	6.40
29 mm	1.5 mm	0.86	–	5.24	2.0 mm	0.88	32	6.60
34 mm	1.5 mm	0.74	–	5.44	2.0 mm	0.76	–	6.80
44 mm	1.5 mm	0.58	–	5.84	2.0 mm	0.59	28	7.20



Special elements:

Stadur FB-1 composite elements can be supplied with optimised sound insulation values by incorporating special sound insulation panels, or with intrusion-inhibiting aluminium inserts, with test certificate. Edge jointing inserts of wood, plastic or aluminium and edge finishing of the foam core as a stepped rebate or tongue and groove are possible. Other core materials, e.g. polyurethane foam, mineral wool or honeycomb construction materials are available on request.



Note:

Due to the thermoplastic material properties of PVC, we advise against the use of coloured facings for outdoor use. In the case of subsequently painted elements, for which Stadur has given no written release, any claim under the guarantee is void. Due to considerably better sound insulation values and a clearly quieter element, we recommend the use of 2.0 mm facing layers. When solvent-based substances are employed, polyurethane foam must be used as the core. Please also note our recommendations concerning the protective foil of the PVC boards.

Please refer to the processing instructions for further information.



Areas of application:

Window panels	Breastwork	Advertising signs
Door panels	Partition walls	Exhibition construction
Facade elements	Vehicle construction	