

**AquaVario**

**STADUR**  
Innovation und Systemlösungen

Made in Germany

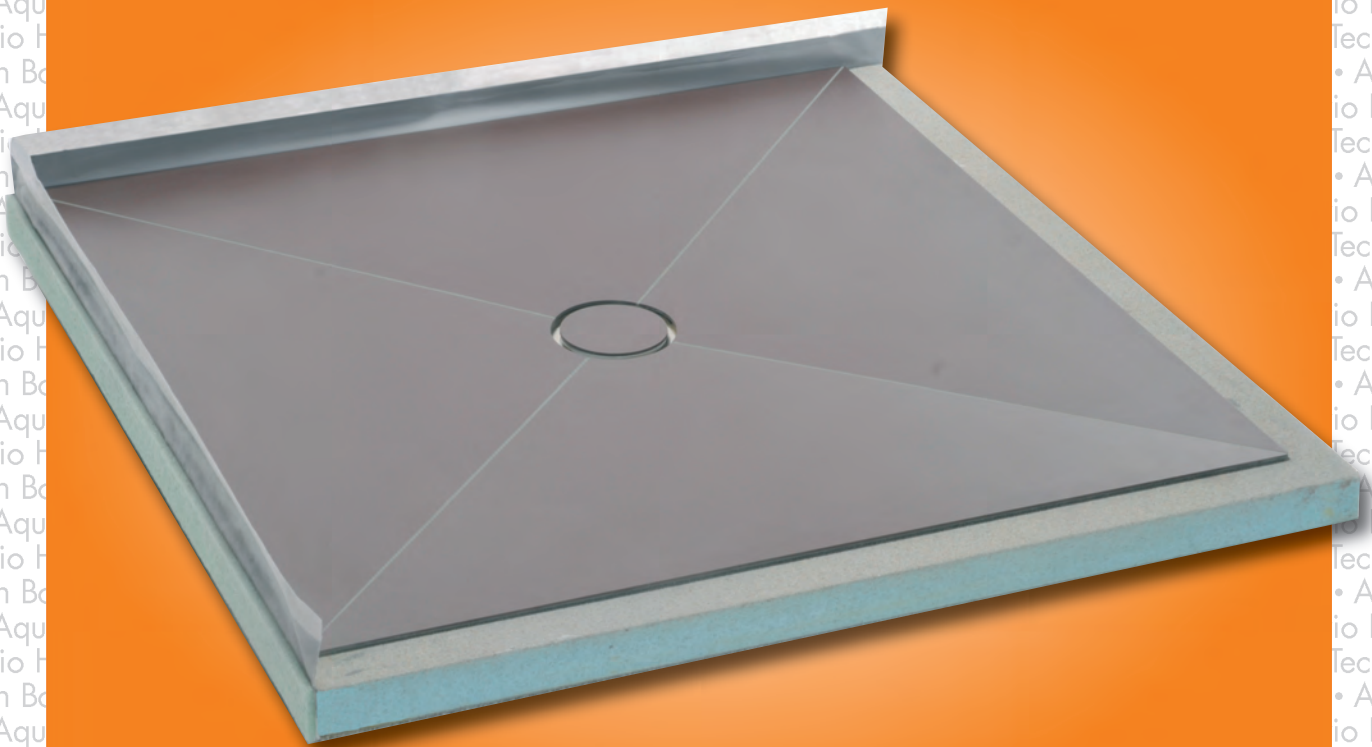
tortora\*

nero\*

fumo\*

moro\*

neve\*



notte

lapis

cielo

neve

perla

fumo

nero

moro

tortora

avorio

oliva

arancio

corallo

**High-Tech Board**  
Exclusive porcelain ceramics

# Complete porcelain ceramic shower tray

- Top layer:** Porcelain ceramic
- Substructure:** Heat insulation as the carrier made of extruded polystyrene with shaped screed edge
- Sound insulation:** Insulating tape 8 mm, on the wall adjacent sides (2 sides) factory fitted
- Wall sealing tape:** Flexible wall sealing tape for integration into the wall sealing, on the wall adjacent sides (2 sides) factory fitted
- Fire protection:** Optionally with integrated fire protection

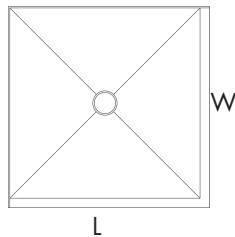
- Surface:** Anti-slip feature acc. to DIN 51130, R10
- Colours:** 13 colours, see colour chart
- Footstep sound** Optional. Rubber granulate 10 mm, applied at the factory, improvement value 18 db
- absorption:** DN 50, horizontal or vertical, flow rate 54 l/sec., with porcelain ceramic cover, acc. to your colour choice
- Floor drain:** acc. to your colour choice
- Characteristics:** chemical-resistant against organic and inorganic solvents, disinfection and cleanser. Food safe – no possibility of ingress of micro-organisms like fungi, bacteria and mildew
- Scratch-resistant – MOHS-grade = 8, Diamond = 10**

## Designs

### Square

Dimensions in mm (L x W x H)	Usable area in mm
858 x 858 x 48	800 x 800
958 x 958 x 48	900 x 900
1058 x 1058 x 48	1000 x 1000
1258 x 1258 x 48	1200 x 1200

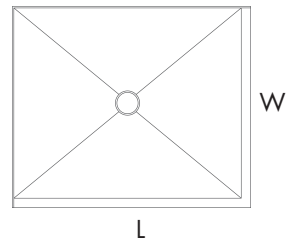
with footstep sound absorption:  
H = 58 mm



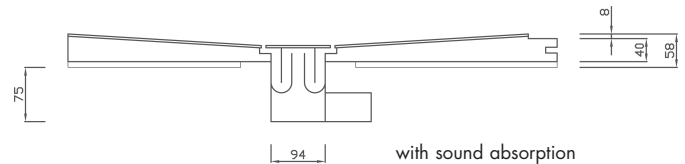
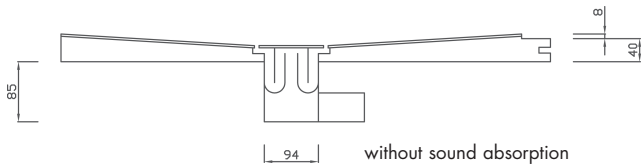
### Rectangular (left and right designs)

Dimensions in mm (L x W x H)	Usable area in mm
958 x 858 x 48	900 x 800
1058 x 858 x 48	1000 x 800
1258 x 858 x 48	1200 x 800
1258 x 958 x 48	1200 x 900

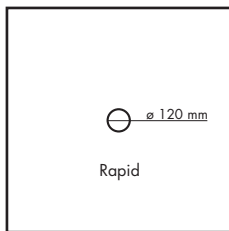
with footstep sound absorption:  
H = 58 mm



## High-Tech Board section drawing



## Accessories



**High-Tech Board Rapid**  
Substructure block (as a substitute for a mortar bed) for height compensation under High-Tech Board, made of Styrofoam. Special coating on both sides, with factory-fitted drain recess. Available to fit all above stated sizes.  
**Material thicknesses: 20, 30, 40, 50, 60, 80 mm**

**Base Tec building board**  
For connection to High-Tech Board. Enables waterproof, dry fitting of floors. Easy, fast and safe processing is ensured by being equipped with groove and tongue.  
Size (L x W x H): 1250 x 600 x 40 mm, with sound absorption 50 mm

Your dealer

AV\_High-Tech\_2009-03-27\_uk.

Colours and dimensions are subject to standard tolerances. Errors and changes reserved.  
\* (Lead time for special colours/structures on request)



Stadur Produktions GmbH & Co. KG  
Ostereichen 2-4, 21714 Hammah, Germany  
Telefon +49 (0) 41 44 -234-0  
Telefax +49 (0) 41 44 -234-100  
E-Mail stadur@stadur.com  
Internet www.stadur.com