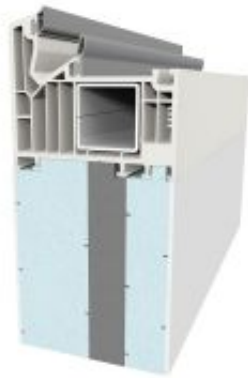


Frame Extension

FrameTec

Description



Stadurlon FrameTec is the ideal solution for meeting the increasing requirements for thermal insulation in order to avoid thermal bridges in the transition between windows and the building.

Stadurlon FrameTec is ideally suited for window enlargements for the bridging of lintels and pillars, as a mounting possibility of roller-shutter boxes or for the stable mounting of floor-to-ceiling windows and doors or lift-and-slide doors on concrete bases. The material used absorbs practically no water and is absolutely resistant to rotting.

Properties

excellent heat insulation, thermal bridges are avoided, weatherproof and non-rotting, high compressive and bending strengths, outstanding screw holding strengths, manufactured with fixed length, width and profile depth, single or double-sided coping for all profile systems

Download

- [FRAMETEC_EN.pdf \(446.1 KiB\)](#)
- [FRAMETEC-WINDOW-SILL-CONNECTION_EN.pdf \(537.7 KiB\)](#)
- [SPECIAL SOLUTIONS.pdf \(893.8 KiB\)](#)

Areas of Application

Bridging of lintels and pillars, mounting possibility of roller-shutter boxes, stable mounting of floor-to-ceiling windows and doors on the concrete base, processing of individual profile enlargements is unnecessary.