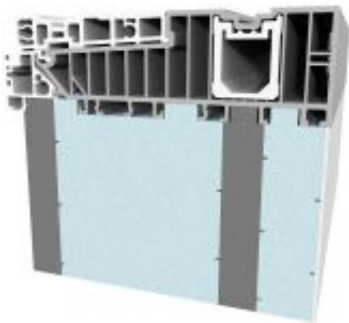


# Stadurlon Threshold Subbase

ProfilTec

## Description



Stadurlon ProfilTec is the ideal solution for meeting the increasing requirements for thermal insulation in order to avoid thermal bridges in the transition between windows and the building.

Stadurlon ProfilTec is ideally suited for mounting on concrete bases or installation in screed. The material used absorbs practically no water and is absolutely resistant to rotting.

## Properties

excellent heat insulation, thermal bridges are avoided, weatherproof and non-rotting, high compressive and bending strengths, outstanding screw holding strengths, manufactured with fixed length, width and profile depth, single or double-sided coping for all profile systems

## Download

- [PROFILTEC-LIFT-AND-SLIDE-DOORS\\_EN.pdf \(708.5 KiB\)](#)
- [PROFILTEC-RESIDENTIAL-DOORS\\_EN.pdf \(692.5 KiB\)](#)

## Areas of Application

Insulated threshold subbase, stable mounting of floor-to-ceiling windows and doors on the concrete base, processing of individual profile enlargements is unnecessary.