



# BUILDING DELIVERY PROGRAM

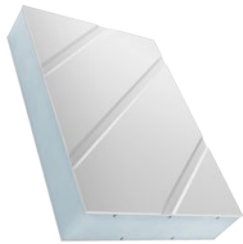
# BUILDING DELIVERY PROGRAM



## **FB-1/SL Stadurlon**

Stadurlon sandwich elements consist of an extruded polystyrene core and, on both faces, top layers of Stadurlon of 1.0 mm, 1.3 mm, 1.5 mm or 2.0 mm thickness.

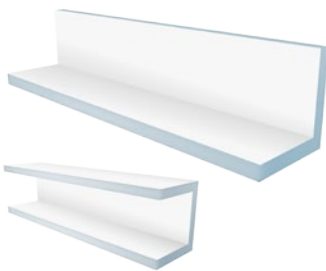
Formats: 2000 x 1000 mm / 2150 x 950 mm / 3050 x 1300 mm  
3000 x 1500 mm / 3000 x 2000 mm / 4000 x 2000 mm



## **FB-1/SLN Stadurlon grooved**

Stadurlon grooved sandwich elements consist of an extruded polystyrene core and, on one face, a painted top layer of 2.0 mm Stadurlon; this features a Softline grooving approximately 1.0 mm deep (groove types: see groove geometries). Reverse side 1.5 mm Stadurlon panels white, similar to RAL 9016 silk-matt, smooth (unpainted).

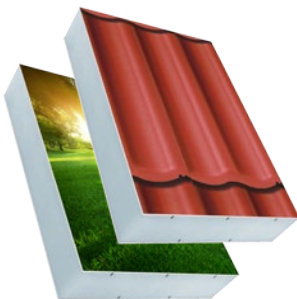
Format: 2000 x 1000 mm



## **FB-1/SL Stadurlon Angle**

Stadurlon Angle sandwich elements consist of an extruded polystyrene core and 1.5 mm thick Stadurlon facings with V-shaped grooves for corner coating.

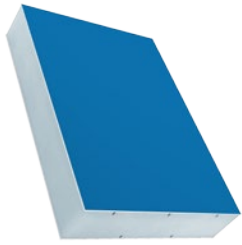
Formats: 2200 x 200 | 200 mm / 2200 x 150 | 150 mm / 2200 x 300 | 300 mm  
2200 x 150 | 300 | 150 mm / 2200 x 200 | 400 mm



## **Stadurlon Image**

Stadurlon Image sandwich elements consist of an extruded polystyrene core and 1.3 mm, 1.5 mm or 2.0 mm thick Stadurlon facings with customized printings.

Formats: 4000 x 1500 mm / 2150 x 1150 mm  
3000 x 1500 mm / 3000 x 1300 mm



### **Stadurlon RAL Color**

Stadurlon RAL Color sandwich elements consist of an extruded polystyrene core and a painted top layer of Staduron in 1.0, 1.3 mm, 1.5 or 2.0 mm thickness on one or both faces.

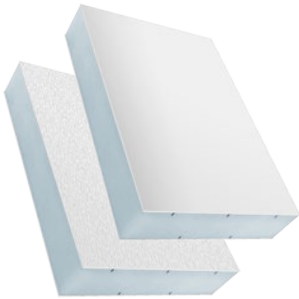
Format: 2000 x 1000 mm



### **Stadurlon EasyPaint**

Stadurlon EasyPaint sandwich elements consist of an extruded polystyrene core and, on both faces, top layers of Stadurlon with a special surface technology, 1.3 mm or 2.0 mm thick; it can be painted immediately, without preparatory work, using standard wet paints.

Format: 3000 x 1500 mm



### **Stadurlon Premium**

Stadurlon Premium sandwich elements consist of an extruded polystyrene core and, on both faces, top layers of Stadurlon of 1.5 mm or 2.0 mm thickness smooth or grained; extremely resistant to scratching, anti-graffiti effect, self-cleaning, UV-stable, resistant to sea water and chemicals

Formats: 3000 x 1500 mm / 3000 x 2000 mm



### **FB-1 PVC**

PVC sandwich elements consist of an extruded polystyrene core and, on both faces, top layers of hard PVC of 1.0 mm, 1.3 mm, 1.5 mm thickness.

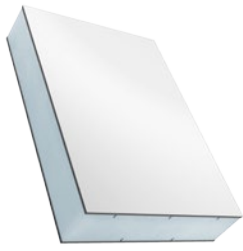
Formats: 2000 x 1000 mm / 3000 x 1500 mm / 3000 x 2000 mm



### **FB-1/EXN PVC Extruded Groove**

PVC extruded groove sandwich elements consist of an extruded polystyrene core with a white 2.2 mm PVC panel with extruded groove on one face. The reverse side consists of a smooth 1.3 mm white PVC panel.

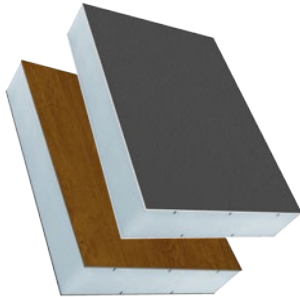
Formats: 2100 x 1000 mm / 3000 x 1500 mm



### **FB-2 Laminate**

Laminate sandwich elements consist of an extruded polystyrene core and, on both faces, 2.0 mm top layers of laminate (Melamine HPL).

Formats: 2150 x 950 mm / 2800 x 1300 mm / 3050 x 1300 mm / 4200 x 1610 mm



### **FB-3/SL Timber**

Stadurlon Timber sandwich elements consist of an extruded polystyrene core and Stadurlon facings (plain colors or wood decor optics). The reverse side can, alternatively, be supplied in white Stadurlon.

Formats: 2150 x 950 mm / 3000 x 1500 mm



### **FB-3/SL Stadurlon Decorative Foil**

Stadurlon decorative foil sandwich elements consist of an extruded polystyrene core and, on both faces, foil-laminated top layers (Renolit, Cova, Hornschuch) of Stadurlon. The reverse side can, alternatively, be supplied in white Stadurlon.

Formats: 2150 x 950 mm / 3050 x 1300 mm



### **FB-3/DN Decorative Foil grooved**

Decorative foil grooved sandwich elements consist of an extruded polystyrene core and, on one face, a foil-laminated top layer (Renolit, Cova, Hornschuch) of laminate or aluminium with softline grooving. The reverse side consists of a foil-laminated, smooth top layer of laminate or aluminium. Elements grooved on both sides can be supplied on request.

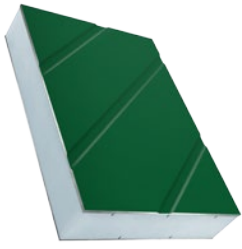
Formats: Laminate: 2150 x 950 mm / Aluminium: 2000 x 1000 mm



### **FB-4 Aluminium**

Aluminium sandwich elements consist of an extruded polystyrene core and, on both sides, top layers of 0.8 mm, 1.0 mm, 1.5 mm or 2.0 mm thick aluminium.

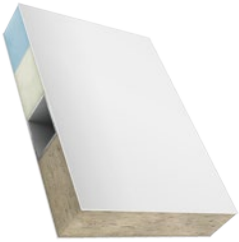
Formats: 2000 x 1000 mm / 2500 x 1250 mm  
3000 x 1500 mm / 4000 x 1500 mm



### **FB-4/DN Aluminium grooved**

Aluminium grooved sandwich elements consist of an extruded polystyrene core and a 1.5 mm aluminium panel painted on one face with milled softline grooving. The reverse side consists of a smooth 1.5 mm aluminium panel. Elements grooved on both faces can be supplied on request.

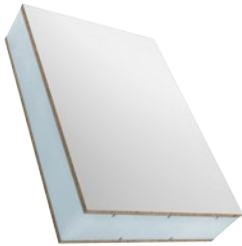
Formats: 2000 x 1000 mm / 2500 x 1250 mm



### **FB-GFK Glass-fibre Reinforced Plastic**

Glass-fibre reinforced plastic sandwich elements consist of a polyurethane foam core and, on both faces, top layers of GFRP.

Formats: Any format up to 14000 x 3200 mm



### **FB-HDF Hard Fibre**

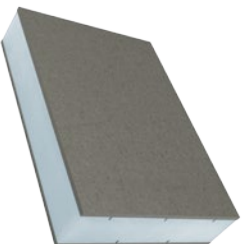
Hard fibre sandwich elements consist of an extruded polystyrene core and, on both faces, top layers of hard, wood fibre panels (sustainable production from domestic forestry thinnings).

Formats: 2600 x 1000 mm / 5200 x 1000 mm



### **Fapatec**

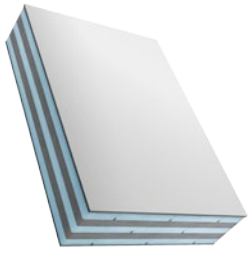
Fapatec sandwich elements consist of an extruded polystyrene foam core and, on one face, a top layer of tempered safety glass or laminated safety glass, with aluminium, steel, PVC or Stadurlon on the reverse.



### **FB-HD Fibre Cement**

Fibre cement sandwich elements consist of an extruded polystyrene core and, on one or both faces, a top layer of weather-resistant fibre cement panels (asbestos-free), 4.0 mm or 6.0 mm thick.

Formats: 2500 x 1200 mm / 3000 x 1200 mm



### **Phon Sound Insulation**

Phon sandwich elements with exceptional sound-damping properties (dB 36 to dB 46), consisting of compact PVC panels or laminate panels, 2.0 mm thick, with a special core.



### **Protec Intruder Protection**

Protec sandwich elements consist of a variety of top layers and of an inner core with an intruder-resistant insert.

Formats: 3000 x 1500 mm / 3000 x 1300 mm  
2000 x 1000 mm / 2000 x 950 mm



### **SKS Self-adhesive Foam**

Self-adhesive foam sandwich elements consist of an extruded polystyrene core with a self-adhesive foil on both faces. The sandwich element is protected with siliconized paper on both faces.

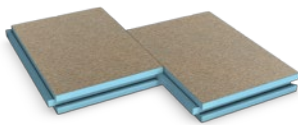
Formats: 2000 x 1000 mm / 3000 x 1000 mm / 3000 x 1500 mm



### **Top / Top Phon**

Top sandwich elements consist of an extruded polystyrene core and 0.72 mm aluminium top layers on both faces. Both long sides have bevels of about 6 mm. Top Phon with 3.0 mm sound-absorbing inserts reduces the sound of rain on the roof by a multiple.

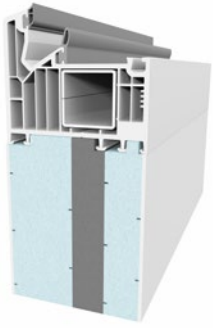
Formats: Width: 1200 mm  
Length: 3000 mm / 4000 mm / 5000 mm / 6000 mm / 7000 mm / 7500 mm



### **Stadur Universal**

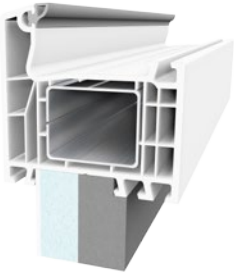
The base insulation panels are made of moisture-resistant extruded polystyrene with a weather-resistant special coating. The panels can be quickly and reliably glued to the foundation with all solvent-free adhesives. The surface enables coloured coatings, rough plaster or even tiling.

Formats: 2600 x 1200 mm / 2600 x 600 mm



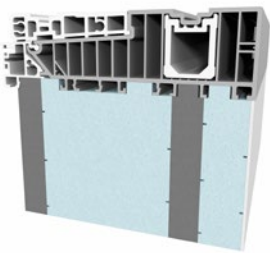
### **Stadurlon FrameTec - Frame Extension**

Stadurlon FrameTec sandwich elements consist of an extruded polystyrene core with a special dark-grey security insert made of StadurFoam and, on both faces, top layers of Stadurlon of 2.0 mm in thickness. Single or double-sided coping for all profile systems. Sizes up to 7000 mm are possible.



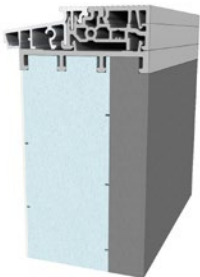
### **Stadurlon FrameTec - Window Sill Connection**

Stadurlon FrameTec sandwich elements consist of an extruded polystyrene core with a special dark-grey security insert made of StadurFoam and, on both faces, top layers of Stadurlon of 2.0 mm in thickness. Single or double-sided coping for all profile systems. Sizes up to 7000 mm are possible.



### **Stadurlon ProfilTec - Lift-And-Slide-Doors**

Stadurlon ProfilTec sandwich elements consist of an extruded polystyrene core with two special dark-grey security inserts made of StadurFoam, whereof one serves as outside facing. The inside layer consists of Stadurlon of 2.0 mm thickness. Single or double-sided coping for all profile systems. Sizes up to 7000 mm are possible.



### **Stadurlon ProfilTec - Residential Doors**

Stadurlon ProfilTec sandwich elements consist of an extruded polystyrene core with a special dark-grey security insert made of StadurFoam as inside facing. The outside layer consists of Stadurlon of 2.0 mm thickness. Single or double-sided coping for all profile systems. Sizes up to 7000 mm are possible.



### **Stadurlon FrameTec - Customised solutions**

Sandwich elements Stadurlon FrameTec customised solutions consist of an extruded polystyrene core with a special dark grey StadurFoam insert and 2.0 mm thick Stadurlon facings. Suitable for all profile systems. Variations: Corner connections, end hole drillings, round arches.

For further information please visit our website [www.stadur.com](http://www.stadur.com)

Revision 2017-09-A



## Contact.

Stadur Produktions GmbH & Co. KG  
Ostereichen 2-4,  
21714 Hammah, Germany

Phone +49 (0) 41 44 / 234-0  
Fax +49 (0) 41 44 / 234-100  
E-mail [stadur@stadur.com](mailto:stadur@stadur.com)  
Internet [www.stadur.com](http://www.stadur.com)