

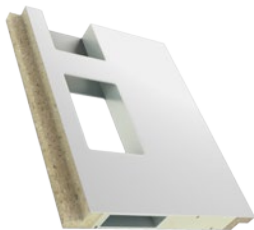


TECHNICS DELIVERY PROGRAM

STADUR
MADE IN GERMANY

TECHNICS

DELIVERY PROGRAM



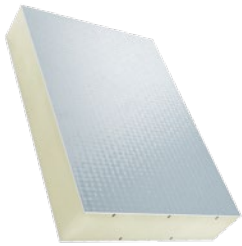
Security inserts / reinforcements / CNC machining

The Stadur CarPlan composite elements can be provided with security inserts and reinforcements made of plastic or metal, e.g. for the bearing of loads or for screw connections. Milled-out features, v-grooves, shiplap edges etc. can be implemented under CAD control immediately following element manufacture using our CNC machining centre.



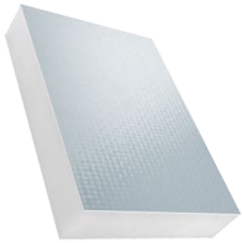
CarPlan GF

Top layer: GRP 1.5 or 1.8 mm on both sides
(other thicknesses available on enquiry)
Standard colour: white, gloss
Core: PUR foam, XPS foam or PP honeycomb
Formats: up to 14,000 x 3,200 mm



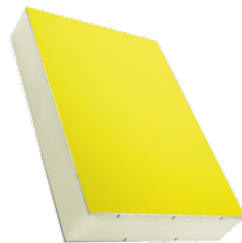
CarPlan GF light

Top layer: GRP Stadur SecureTec 0.8 mm on both sides
Standard colour: white, gloss
Core: PUR foam 40 kg/m³
Formats: up to 14,000 x 3,200 mm



CarPlan Superlight

Top layer: GRP 0.6 mm neocarbon look on both sides
Standard colour: white
Core: polystyrene core RETEX
Formats: up to 14,000 x 2,500 mm



CarPlan AL

Top layer: aluminium 1.0 mm on both sides
Standard colour: similar to RAL 9010, gloss
Core: PUR foam, XPS foam or PP honeycomb
Formats: up to 9,000 x 2,500 mm



CarPlan Construct

Top layer: Stadur MultiPlan K 1.5 or 2.0 mm on both sides
Standard colour: white, silk matt
Core: PUR foam, XPS foam or PP honeycomb
Formats: up to 14,000 x 2,200 mm



Contact.

Stadur Produktions GmbH & Co. KG
Ostereichen 2-4,
21714 Hammah, Germany

Telefon +49 (0) 41 44 / 234-0
Telefax +49 (0) 41 44 / 234-100
E-Mail stadur@stadur.com
Internet www.stadur.com